

## Installation guide for HS-5008 & H5020 washers on Girbau pedestal

### IMPORTANT

**Read through entire instructions before starting**

If machines are mounted on pedestals not supplied or approved in writing by the manufacturer or the properly authorized distributor, or if all printed installation, operating and maintenance instructions are not followed, the warranty is void.

It is extremely important that the installation guidelines are followed to ensure the maximum life expectancy of the washer-extractor. Any installation that does not meet these requirements should be upgraded to meet these specifications or premature failure may occur.

**Note:**

**For additional information regarding machine installation, operating and maintenance, please refer to the handbooks provided with each new machine.**

**If handbooks are missing, contact the manufacturer or distributor**

### Pedestal description

The pedestal for HS-5008 and H5020 washing machines is a metallic structure formed by a frame constructed in steel that allows installing the washing machine above the level of the floor to facilitate linen loading and unloading operations.

This structure leans on four legs with rubber protection and does not need fixation to the floor.

The pedestal dimensions are: width: 690mm (27.2 inch.); length: 681mm (26.8 inch.); height: 215 mm (8.5 inch) Approximate weight: 40 kg (88 lbs.)

### Floor foundation specifications

HS & H-Series washers are soft mounted machines and therefore the stress transmitted to the floor is low. However the weight of the washer is considerable. Install the washer on a secure foundation capable of sustaining the washer's weight. The following foundation requirements should be met:

- Concrete floors should be 3500-psi (250kg/cm<sup>2</sup>) minimum.
- The contact surface must be perfectly smooth and level
- All four pedestal feet **MUST** be **IN FULL CONTACT WITH THE FLOOR** to prevent washer from vibrating and also making sure the machine operates in a balanced manner and without noises.
- HS & H-Series machines are not rated on floor thickness but rather floor structural specifications in accordance with STATIC, DYNAMIC and FREQUENCY ratings.

**Floor strength requirements** are as follows:

Model	Static Load	Dynamic Load	Max. Frequency
HS-5008	193 kg.	52 kg.	16.2 Hz
H5020	425 lbs.	115 lbs.	

**Note:**

**Never install these machines on suspended floors or above ground level without obtaining approval from qualified personnel (Structural Engineer for Building safety and noise transmission) Manufacturer refuses any responsibility for damage caused by vibration to building structure or equipment in these cases.**

## Parts supplied:

### With the washer (fig. 1):

- A- Leg pads
- B- Leveling parts
- C- Opening leveling washers

### With the pedestal

- Pedestal
- 5 Screws M10x25

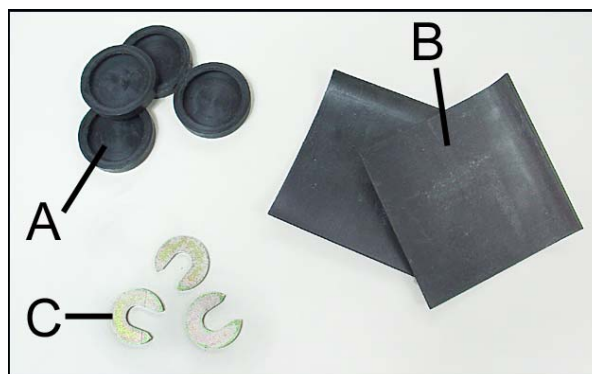


fig. 1

## Mounting schematic (fig. 2)

- A- Washer base
- B- Pedestal
- C- Screw M10x25
- D- Washer 26x12x3
- E- Safety nut M10
- F- Foot
- G- Leg pad
- H- Washer 26x12x3

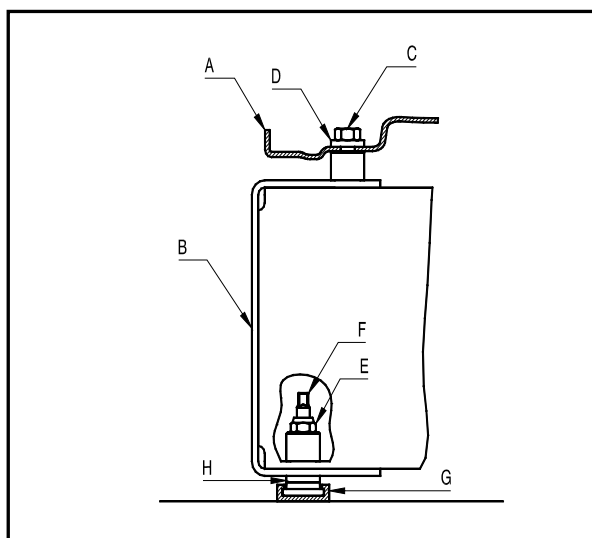


fig. 2

## Pedestal leg assembly.

Consult assembly schematic in figure 2.

The legs installed on the pedestal should be dismantled from the washer.

Once the protective packaging has been removed, do not remove the machine from its wooden base.

Incline the machine towards the back and place a thick piece of wood (fig. 3), about 200 mm. (8 inch) high (approximately)

**Remove the lower cover by removing the three screws along lower portion of cover.**



fig. 3

Hold the upper end of the washer leg with a wrench (*fig. 4*) and remove the affixing nut. Remove the leg and put the washers aside. Repeat the operation with the second leg from the front side of the machine. Mount the front cover and remove the block of wood.


*fig. 4*

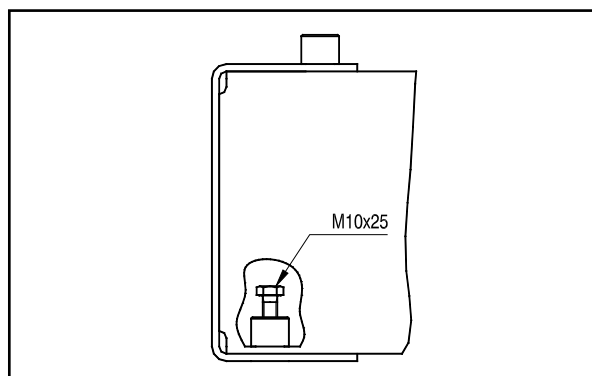
Pliers can also be used (*fig. 5*) to hold the base of the leg in place.


*fig. 5*

Incline the machine towards the front and prop it up (*fig. 6*). Remove the screws holding the rear central cover, moving it upwards to separate it from the machine. Remove the back legs and put the washers aside. Replace the rear cover and remove the block of wood.


*fig. 6*

Remove the four M10x25 bolts from the pedestal (*fig. 7*). These are used to affix the washer to the pedestal.


*fig 7*

Place two spacer washers on each leg. (see figure 2, position H)

Bolt down the legs on the pedestal. Strongly tighten them with a wrench from the upper end (*fig. 8*) or from the leg base with a pair of pliers (*fig. 9*) and affix them with the counter wrench.


*fig. 8*

*fig. 9*

## Pedestal placement

**All four pedestal feet MUST be IN FULL CONTACT WITH THE FLOOR** to prevent washer from vibrating and also making sure the machine operates in a balanced manner and without noises.

Situate the pedestal in its permanent location.

Mount the rubber pads on each of the legs (*fig. 10*),

Check that it is level and that the four legs are resting uniformly on the floor.

If one of the legs is not resting on the floor, add some of the rubber leveling pads supplied with the washer (*fig. 11*).

**NEVER SLIDE THE PEDESTAL ON THE FLOOR.**


*fig. 10*

*fig. 11*



On highly irregular floors which a **CONSIDERABLE LEVEL CORRECTION** is required, use the open levelling washers. To install them: loosen the affixing nut and supplement the height of the leg by inserting the open levelling washers between the base of the machine and washers on the leg base. Retighten the affixing nut (*fig. 12*).



fig. 12

## Mounting the machine on the pedestal

**The washer weighs 113 kg (249 lbs). It is recommended that any placement or movement of the washer be carried out by two people.**

Before mounting the machine on the pedestal, be sure that the pedestal is in its appropriate place and that the four legs rest uniformly on the floor.

Locate a metal tube with an approximate diameter of 35/40 mm (1½ inch.) and a length of 670 mm (27 inch.) on the pedestal next to the front holding down points of the washer (*fig. 13*).

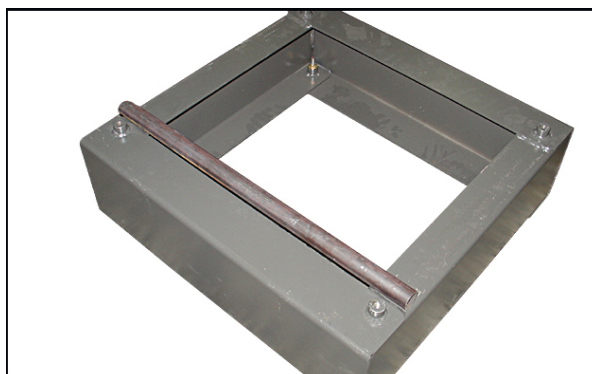


fig. 13

Protect the front of the washer to avoid blows or scratches to it when handling it with the hand trolley.

To transport the washer, use a hand trolley capable of supporting the weight of the washer. Insert the front lip of the hand trolley between the washer base and the wooden base (*fig. 14*).



fig. 14



fig. 15

Lift the washer and move it in front of the pedestal, incline it and place the washer base on the pedestal. (fig. 15 & 16).

Push the front of the washer in such a way so it slides over the tube (fig. 17).

Situate the washer over the affixing points on the pedestal.

Lift the front part of the washer and remove the tube.

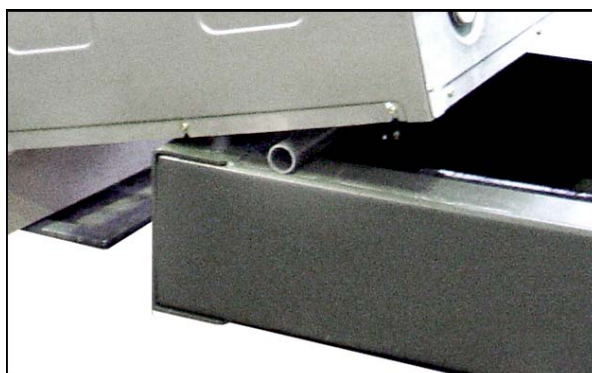


fig. 16



fig. 17

Remove the rear central cover (fig. 18)



fig. 18

Remove the lower front cover (*fig. 19*) of the washer.



*fig. 19*

Adjust the position of the affixing holes on the base of the washer over the holding down points. Unite the washer base with the pedestal using the M10x25 bolts and the washers previously removed from the base (*fig. 20*). Also consult the figure 2, positions **C** and **D**. Do not tighten the bolts yet.



*fig. 20*

Adjust the alignment of the sides of the washer with the sides of the pedestals and **TIGHTEN THE HOLDING DOWN BOLTS**.

## Removal of shipping restraints.

SAVE ALL BRACES AND SCREWS. IN CASE THE WASHER MUST BE REMOVED FOR SERVICE OR MOVED TO A NEW LOCATION, REPLACE SHIPPING RESTRAINTS IN THE REVERSE MANNER IN WHICH THEY WERE REMOVED.

Remove the C-clamp **A** on top of yellow shipping brace by removing the attachment nuts **B**. (*fig. 21*).



*fig. 21*

Remove the four shock absorber restraints by pulling the yellow rope and detaching each restraint separately (*fig. 22*). Lightly push upwards on the suspended group in order to facilitate the removal of holding parts from the shock absorbers.

Remove the yellow shipping brace by removing the two screws **C** that attach it to the washer base and pull out the front (*fig. 21 & 22*).

Mount and affix the rear and front covers.



*fig. 22*

## Start-up and verification.

**Note:**

**Failure to remove all shipping restraints before running machine may cause irreparable damage to the washer. The warranty does not cover these incidents.**

Once the washer is connected following the instructions of the Installation Instructions, proceed to verify the stability of the machine.

**Remember that:**

All four pedestal feet **MUST** be **IN FULL CONTACT WITH THE FLOOR** to prevent washer from vibrating and also making sure the machine operates in a balanced manner and without noises.

This must be checked by running the machine with an out of balance load at spin speed, i.e. 4-5 bath towels and checking the feet for movement. If any vibration is detected in the pedestal feet, adjust the level using the rubber levelling pads supplied with the washer.

In most cases, this fine tuning procedure should only be needed on the front legs.

**Remember that:**

For LOGI control models, the acceleration feature can be used to advance the program (see Instructions Manual, section 1.5).

The "DEMO" mode may be used to access the final spin on COIN models (see Advanced Instructions Handbook, section 2.4).